

STD Series Handheld Laser Welding Machine

Handheld Laser Welding Machine (Air Cooling)



" Fiber continuous handheld laser welding machine " consists of an integrated cabinet, fiber laser source, laser control system and handheld welding head. This product is widely used in metal advertising word welding, stainless steel engineering welding, sheet metal cabinet welding and large sheet metal structure welding.

Features:

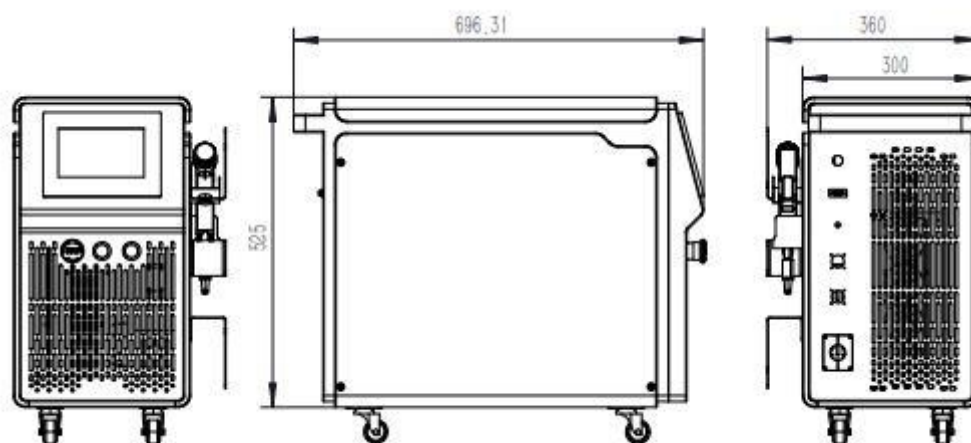
- The welding speed is fast, 2-10 times faster than traditional welding. One machine can save at least 2 welders a year.
- Laser welding requires less consumables and has a long service life.
- The operation is simple, and you can start working without a work permit, and you can weld beautiful products without a teacher.
- The weld is smooth and beautiful, reducing the subsequent grinding process, saving time and cost.
- There is no deformation or scar in the welding work, and the welding is firm.
- Safer and more environmentally friendly.
- The independently developed stirring welding head makes up for the disadvantage of the small laser welding spot, expands the tolerance range and welding width of the processed parts, and obtains better weld formation.
- The integrated cabinet integrates laser, software control, etc., and has unique advantages such as small footprint, easy mobility, and strong functionality.
- The handheld welding head is equipped with 5m-10m original optical fiber, which is flexible and convenient.
- Handheld operation mode, equipped with a special welding nozzle, can achieve welding at any part and any angle of the work.
- Suitable for butt welding, lap welding, internal and external fillet welding, arc welding, irregular shape welding, etc.
- Proprietary laser safety operation protection function ensures the safety of operators during work.

Parameterindex:

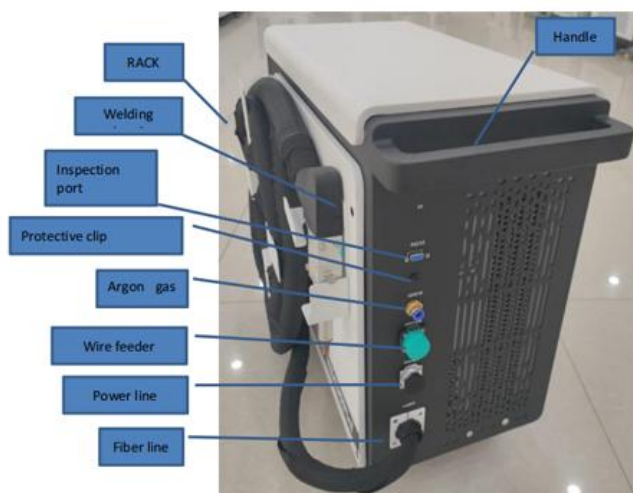
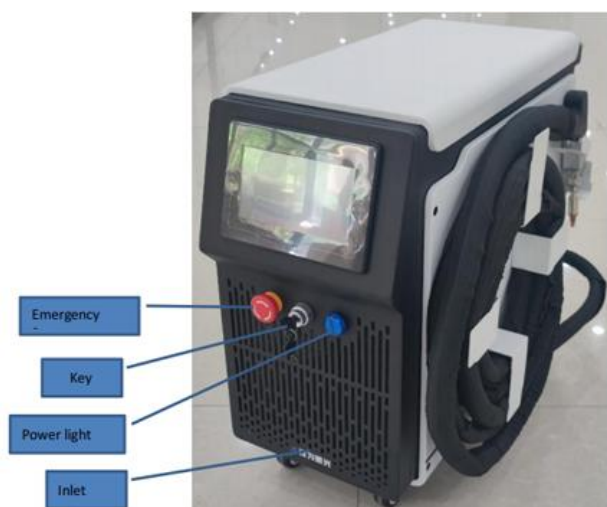
| Model | STD-80FL | STD-15L | STD-15FT | STD-20FT |
|------------------|-----------------------------------|-----------------------------------|-----------------------------------|---------------------------------|
| Laser power | 750W | 1200W | 1500W | 2000W |
| Working mode | Continuous or modulate | | | |
| Laser wavelength | 1064 NM | | | |
| Beam quality | M2<1.1 | M2<1.2 | M2<1.2 | M2<1.2 |
| Power supply | AC220V ± 5 % 50/60Hz 10A | AC220V ± 5 % 50/60Hz 16A | AC220V ± 5 % 50/60Hz 16A | AC220V ±5% 50/60Hz 20A |

| | | | | |
|------------------------------------------|------------------------------------------------------|----------|----------|----------|
| Total power | ≤2300 W | ≤3000 W | ≤3500 W | ≤4500 W |
| Cooling system | Air Cooling | | | |
| Fiber length | 10M Customizable | | | |
| Temperature range of working environment | 0 ~ 38 °C | | | |
| Applicable materials | Carbon steel, stainless steel, galvanized sheet, etc | | | |
| Penetration thickness range | MAX 2 mm | MAX 3 mm | MAX 4 mm | MAX 4 mm |
| Weld requirements | < 0.5 mm | | | |

Appearance and function



External Dimensions: 697 * 360 * 532MM (kg)





Welding Head



2025 NEW LASER HAND WELDING MACHINE

Simple Operation Improves Efficiency by 2-10 times



FOUR CORE TECHNOLOGIES

LASER
WELDING

|||



**Save Labor Costs
Save 2 Welders**



**24 Hours Delivery
High Efficiency**



**Low Consumables
and Long Lifespan**



**Beautiful Welding
Without Deformation**

WHY CHOOSE OUR WELDING MACHINE ?

• • •

Our hand-held welding machine can be operated by 1 person, the operation is simple, the welding is formed once, and the quality and efficiency of the manufacturing industry can be improved in only about one-third of the time of the traditional process.

The traditional process of chamfering requires at least 5 processes including plasma cutting, polishing, drilling, milling, and chamfering, with 4 transfers and 4-5 workers to complete. Moreover, it is time-consuming and requires inconsistent precision.



Handheld Laser Welding



Common Welding Machine



**No need for protective gear
simple and easy to use**



**High risk occupations
require gloves and masks**



**One machine saves at least
two welders per year**



**Slow welding speed , It
takes 4-5 people to weld**

MORE SECURE

INDEPENDENTLY DEVELOPED WELDING JOINTS

Our welding joints compensate for the disadvantage of small laser welding spots, expand the tolerance range and welding width of processed parts, and achieve better weld formation.











- Welding work has no deformation, no scars, and the welding is firm.
- The handheld welding head is equipped with 5m-10m original optical fiber, which is flexible and convenient.
- Handheld operation mode, equipped with a dedicated welding nozzle, can achieve welding at any angle for work.
- Suitable for splicing, stacking, internal and external corner welding, circular arc welding, irregular shape welding, etc.

WORKPIECE WELDING MOLDING

Simple operation, simple training can be operated; Once forming, light and flexible can realize the welding of any part of the workpiece, making the welding work more efficient, safe, energy saving and environmental protection.



MULTIPLE ANGLE WELDING

| | | | |
|-------------------------------------------------------------------------------------------------------|-----------------------------------------------------------------------------------------------------------|-----------------------------------------------------------------------------------------------------------|------------------------------------------------------------------------------------------------------------|
| <p>Butt Welding</p>  | <p>Lap Welding</p>  | <p>Stitch Welding</p>  | <p>Pin Welding</p>  |
| <p>Edge Welding</p>  | <p>T-shaped welding</p>  | <p>Stacked Welding</p>  | <p>Flanged welding</p>  |



Fillet Welding



Lap Welding



Butt welding



Stacked Welding

PRODUCT DETAILS

Ergonomic design, simple and easy to operate,
durable work is not easy to get tired





FULL AUTOMATIC WELDING

Meet the welding requirements of complex working conditions,
realize oblique seam welding, three-dimensional welding

Fast
Speed

No
Scars

Long
lifespan



The image is a side-by-side comparison of two welding results. On the left, a vertical weld bead is shown on a metal surface, appearing very smooth and uniform. On the right, another vertical weld bead is shown, but it is much rougher, with visible ripples and irregularities. The left side is highlighted with a blue background and a checkmark icon, while the right side has a dark background and a red 'X' icon.

**Our Welding
Machine**

Instantly arc
beautiful and smooth

**Other Welding
Machines**

Uneven arc initiation and
easy to stick to welding rods

LASER WELDING HEAD

Ergonomic design, comfortable grip, easy to operate



HIGH QUALITY HIGH CONFIGURATION

GOOD QUALITY DETAILS FIRST



01

INTEGRATED TOUCH SCREEN

Different parameters can be called with one click, supporting multi language switching

02

BRAND LASER

High output power stability, low failure rate, low energy consumption, and long lifespan





03

INDEPENDENTLY DEVELOPED GUN HEAD

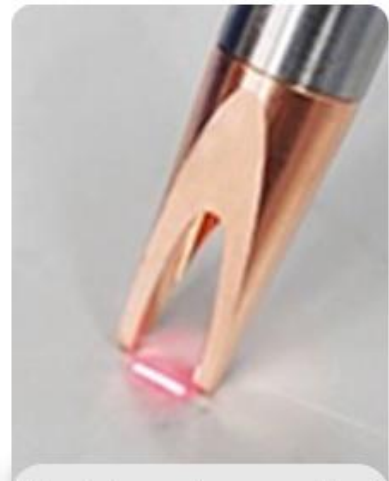
Ergonomic design, comfortable grip, lightweight head, suitable for welding various welding components



Standardized wiring



Air switch



Flexible and convenient

WIDE RANGE OF APPLICATIONS

MEET THE PRACTICAL NEEDS OF MULTIPLE INDUSTRIES



**SHEET METAL OUTER
CORNER WELDING**



**STAINLESS STEEL 360-
DEGREE WELDING**



**WELDING OF
ALUMINUM ALLOY**



**ALUMINUM PLATE OUTER
CORNER WELDING**



**INSIDE CORNER
WELDING**



**CARBON STEEL
FLAT WELDING**

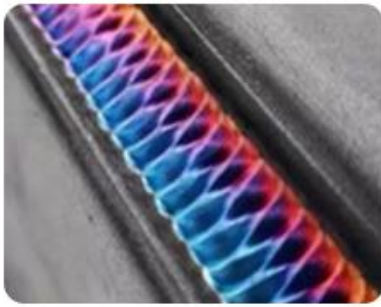


PLATE SPLICING



PLATE SPLICING



T-SHAPED WELDING



ROUND TUBE WELDING



STEEL PIPE WELDING



PIPELINE WELDING



PLATE SPLICING



PLATE SPLICING

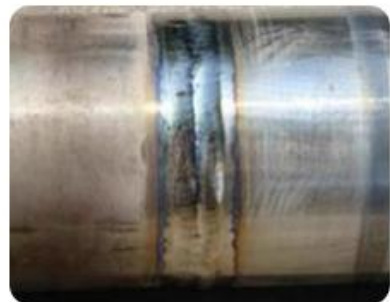


PLATE SPLICING



PLATE SPLICING



TEAPOT WELDING

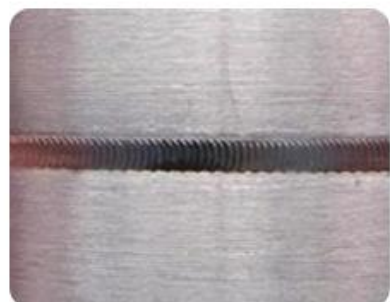


PLATE SPLICING