

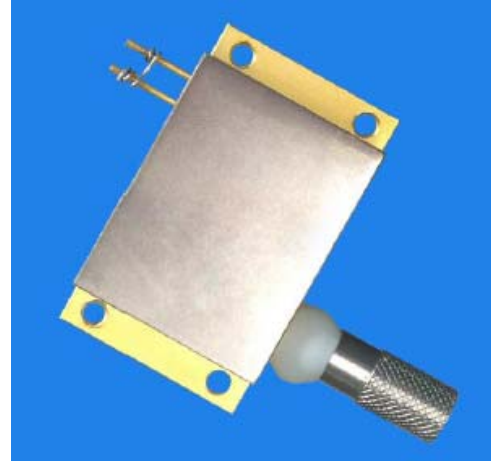
Fiber-coupled Laser Diode STC-LDM-808-30-T4S

Characteristics

Output Power: 30W
Wavelength: 808nm
Fiber Core Diameter: 400µm
Numerical Aperture: 0.22

Applications

Laser Scalpel
Medical Applications
Dental Treatment



	Parameter	Symbol	Typical	Unit
Optical	CW Out Power	Pop	30	W
	Center Wavelength		808±3	nm
	Spectral Width (90% of Power)	Δ	<3	nm
	Wavelength Shift with Temperature	Δ / ΔT	0.3	nm / °C
Electrical	Threshold Current	I _{th}	1.8	A
	Operating current	I _{op}	9.0	A
	Operating Voltage	V _{op}	7.2	V
	Slope Efficiency	η	4.0	W/A
	Power Conversion Efficiency	η _{ep}	45	%
Fiber	Core Diameter	d _{core}	400	µm
	Numerical Aperture	NA	0.22	-
	Fiber Length	L	1.0	m
	Connector	-	SMA905	-

Parameter	Operating Temperature/°C	Operating Relative Humidity/%	Storage Temperature/°C	Storage Relative Humidity/%	Lead Soldering Temperature, 10s max/°C
Min	10	-	-20	-	-
Max	40	75	80	90	250

